

smartModul™



- **Gas sensor with infrared detection technology**
- **Detection of combustible gases or carbon dioxide**
- **Highly reliable**
- **Continuous output signal**
- **Settable alarm thresholds**
- **Bus-capable (Modbus-protocol)**
- **Operational life > 10 years**

Technical data

General features

Gases detected	combustible gases (methane, ethane, ethylene, propane, butane, acetylene) or carbon dioxide
Detection principle	infrared absorption
Detection range	combustible gases: 0 – 100% LEL CO ₂ : 0 – 5000 ppm, (larger range on request)
Resolution	combustible gases - 1% LEL / CO ₂ – 20 ppm
Measurement error	< 2%
Operating temperature	-10°C to 50°C (higher temp. on request)
Pressure	800 hPa – 1100 hPa
Humidity	0% - 95% rel. humidity
Response time	< 25 sec., diffusion < 5 sec., pumped flow

Electrical data

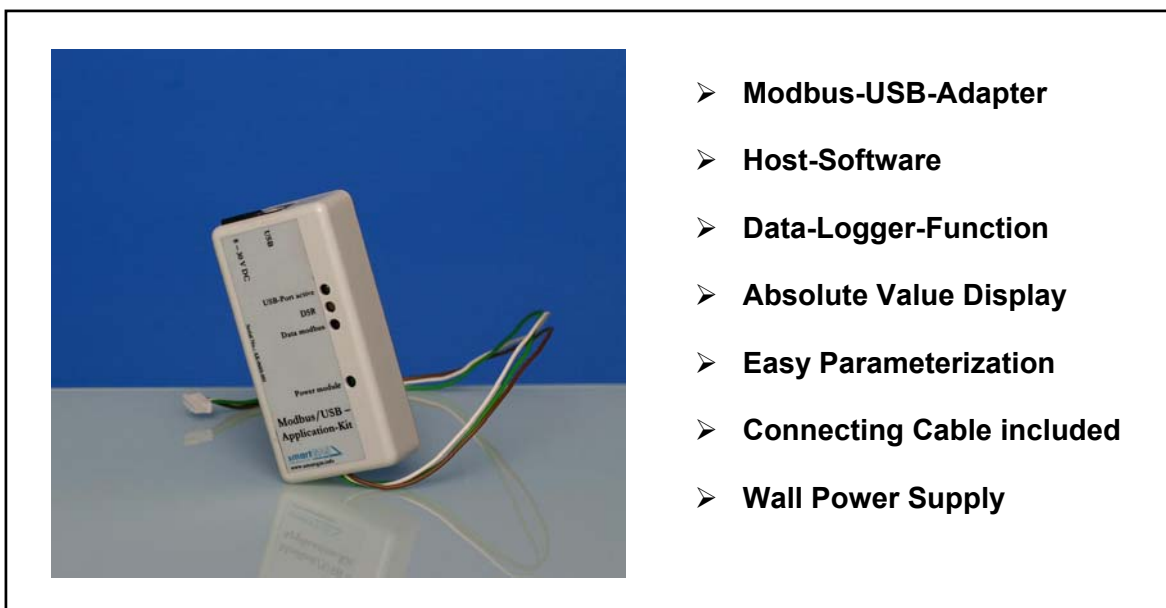
Supply voltage	6.3 V DC +/- 5 %
Current consumption	max. 240 mA
Signal	2 alarm outputs (open collector) with settable alarm thresholds, digital output (TTL) and / or Modbus open protocol

Mechanical data

Dimensions (l x w x h)	62 mm x 37 mm x 30 mm
Storage temperature	-25 to 60°C

Optional equipment:

smartApplication-Kit™



Description:

The smartApplication-Kit™ allows the customer to test the performance of the smartMODUL™ before integrating it in his existing systems.

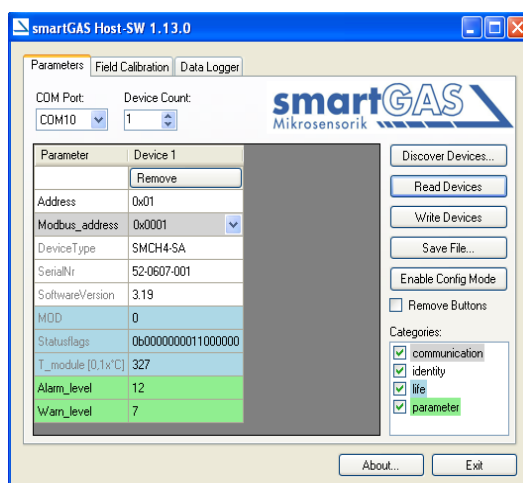
The smartApplication-Kit™ contains a modbus-USB-adapter for the transfer of the measurement data to a connected PC or Notebook.

With the smartGAS Host-Software (see picture) you can collect the measurement data and see them on the screen.

The absolute value of the monitored gas concentration can be pictured on the screen and can be analysed with e.g. Microsoft Excel.

The data-logger-function allows to store the values for a long period.

Furthermore the customer can set the thresholds to his personal demands.



Picture 1. Screenshot of the smartGAS Host-Software