

# UV-Cosine Probe with 4-20mA Output and Broadband SiC Photodiode

Part Number: UV\_Cosine\_ABC\_AMP4-20mA\_cable



Our probes from the series **UV-Cosine** are characterized by a special housing with wide angle characteristics (cosine correction). The probes are IP65 jet water resistant, have a soil-resisting surface and are easy to mount.



UV\_Cosine\_ABC\_AMP4-20mA\_cable

## Features of UV\_Cosine\_ABC\_AMP4-20mA\_cable :

- only for UVC measurement, e.g. for purification control, spectral sensitivity according to DVGW W294-3
- filtered, silicon carbide based UV photodiode for extreme radiation hardness
- integrated amplifier with 4...20mA output
- offset and amplification factor are adjustable
- with M20x1,5 thread for comfortable mounting
- special housing with wide angle characteristics
- IP65 jet water resistance
- 2m shielded cable
- delivery with mounting set (locknuts and sealing ring)

Probes from the **UV-Cosine** series are available with the following details:

<i>Sensortype</i>	<i>Part Number</i>
with broadband photodiode	UV_Cosine_ABC_Design
with UVC Photodiode according to DVGW W 294-3	UV_Cosine_C_Design
with erythema sensor DIN5050 ISO17166/CIE S 007/E	UV_Cosine_UV-Index_Design

<i>Design</i>	<i>Part Number</i>
with 4-20mA output and 2m cable	UV_Cosine_Sensortype_AMP4-20mA_cable
with 4-20mA output and 5-pin sensor connector	UV_Cosine_Sensortype_AMP4-20mA_plug
with 0-5V output and 2m cable	UV_Cosine_Sensortype_AMP0-5V_cable
with 0-5V output and 5-pin sensor connector	UV_Cosine_Sensortype_AMP0-5V_plug

Please consider the following probe series:

- UV-Air<sup>®</sup> (compact stainless steel probe)
- UV-Water (10bar water pressure resistant)

# UV-Cosine Probe with 4-20mA Output and Broadband SiC Photodiode

Part Number: UV\_Cosine\_ABC\_AMP4-20mA\_cable

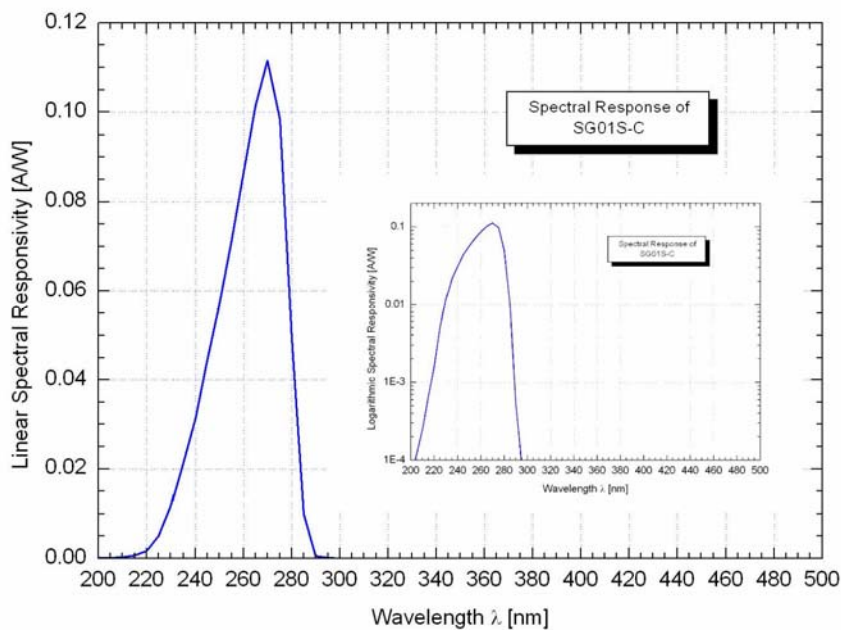


- UV-DVGW (probe compliant to DVGW W 294-3(2006))

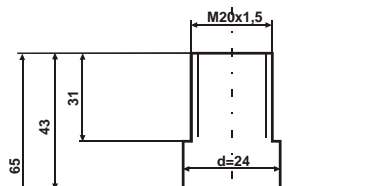
## Technical Data (T<sub>a</sub> = 25 °C)

Parameter	Symbol	Value	Unit
Power supply	V <sub>B</sub>	24	V
Output signal	I <sub>OUT</sub>	4...20	mA
Power consumption	I <sub>max</sub>	<30	mA
Linearity	L	2	%
Temperature drift	ΔT	0,03	W/m <sup>2</sup> /K
Wavelength of max. sensitivity	λ <sub>Smax</sub>	270	nm
Sensitivity range(S=0.1*S <sub>max</sub> )	-	230 – 285	nm

## Spectral Sensitivity (photodiode SG01S-C-18)



## Dimensions



### configuration:

brown: 0  
white: V<sub>+</sub>

Seite 2 [3]

PRC Technologies Corporation Ltd.  
328/65 Ladprao 87 Rd, Wangthonglang, Bangkok 10310  
T: 02 530-1714, 530-1619, 530-1721; F: +662 530-1731

www.prctechnologies.co.th

## **UV-Cosine Probe with 4-20mA Output and Broadband SiC Photodiode**

Part Number: UV\_Cosine\_ABC\_AMP4-20mA\_cable

